

CONSTRUCTION NOTICE

Capital Line South LRT Utility Relocation Project
111 Street NW and 9 Avenue NW

MAY 2023

PROJECT OVERVIEW

As part of the City of Edmonton's Capital Line South LRT Extension Project, EPCOR is responsible for relocating all the power, water and drainage utilities to avoid potential conflicts with future LRT infrastructure. This line is an extension of the current Capital Line, which will operate from Century Park to Ellerslie Road.

To meet the overall LRT project schedule, the City of Edmonton has requested that EPCOR perform the utility relocations within specific areas along the alignment prior to LRT construction. EPCOR Capital Line LRT projects began in March 2023 and will continue until 2024.

WHAT'S HAPPENING?

Starting in mid-May, for approximately one month, EPCOR will be working at the intersection of 111 Street NW and 9 Avenue NW to relocate electricity infrastructure.

To install new underground power cables, EPCOR will be using a hydrovac truck for the majority of the excavation work. After excavating in certain areas, horizontal directional drilling will be used to install the new power cables. While the power cables are being installed, EPCOR will make small excavations throughout the route, to verify and avoid locations of existing utilities and ensure no damage occurs.

SCHEDULE

Construction will begin in **mid-May** and is expected to be complete within **one month**, weather permitting. The typical hours of construction will be **7:00 a.m. to 9:00 p.m., Monday to Saturday**.

PROJECT DETAILS

Residents and businesses can expect to see activity that is typical to construction, including company/contractor vehicles and equipment.

Power Outages

Power outages may be necessary at times to ensure work can be completed safely. Customers can learn more about power outages at epcor.com/poweroutages.

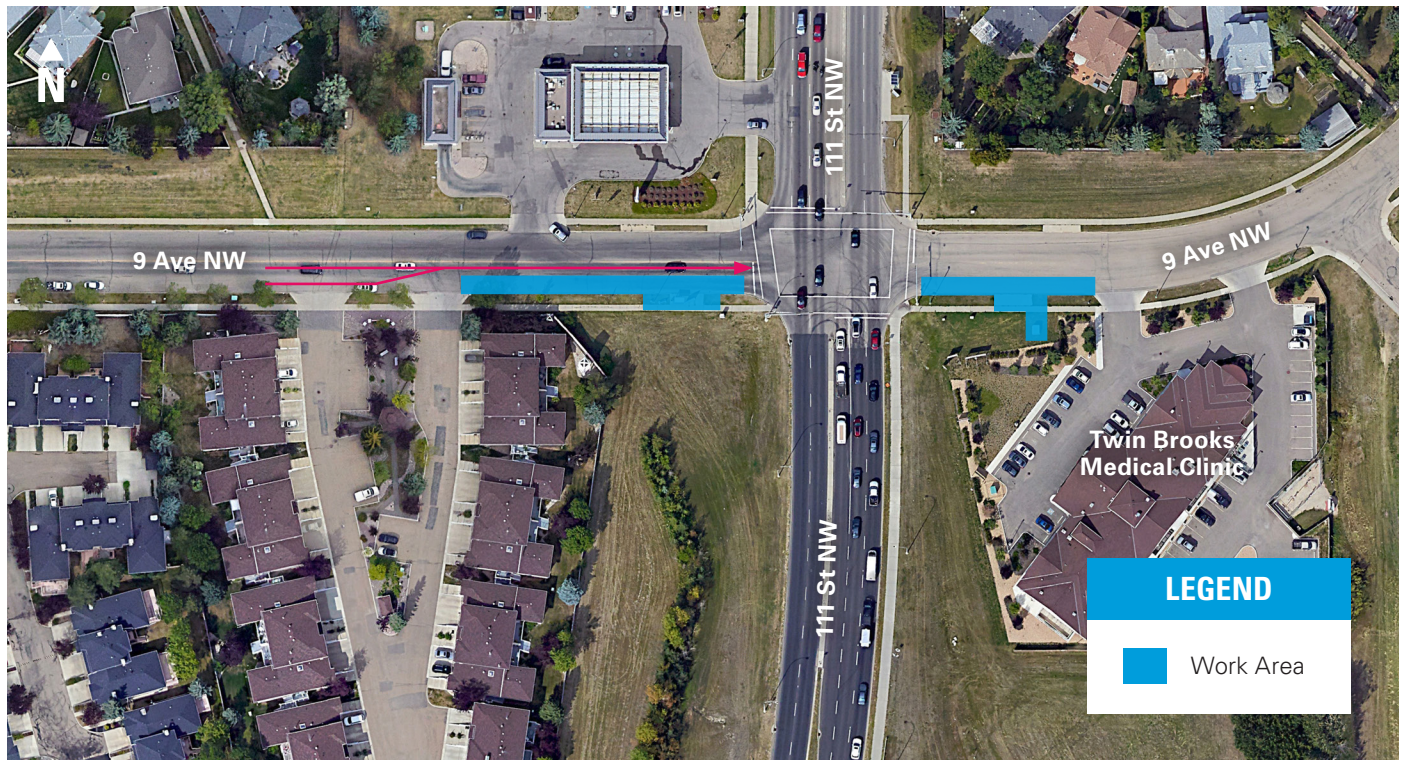
Noise

This project may be noisy at times. We will comply with the City of Edmonton's Community Standards Bylaw for Noise Control. If it is necessary to temporarily exceed acceptable noise levels, we will work with the City of Edmonton to obtain the necessary permits.

Restoration

Landscaping and pavement will be restored after construction is complete and weather permits.

PROJECT AREA



Please note work areas may change due to weather or ground conditions.

TRAFFIC IMPACTS

- Temporary road/lane restrictions are expected along the south side of the intersection at 111 Street NW and 9 Avenue NW.
- For one week, traffic travelling eastbound across 111 Street NW at 9 Avenue NW will be reduced to one lane.

PEDESTRIAN IMPACTS

- Temporary sidewalk restrictions are expected along the south side of the intersection at 111 Street NW and 9 Avenue NW, access through this area will be maintained.

SAFETY

The construction area will be fenced and/or marked as a restricted area. We will take every precaution to ensure public safety. We also need your assistance in keeping a safe distance from the construction sites and the equipment.

MORE INFORMATION

Phone: 780-412-4200

Email: EPCORprojects@epcor.com

Website: epcor.com/capitalline