

GOLD BAR VIRTUAL OPEN HOUSE – ONLINE FACILITATED ENGAGEMENT SESSIONS – SEPTEMBER 2020

WHAT WE HEARD REPORT

CONTENTS

- VIRTUAL OPEN HOUSE DETAILS 3
 - WORK COMPLETED WITH THE COMMUNITY PRIOR TO THE OPEN HOUSE 3
- INVITATION 4
- OPEN HOUSE PURPOSE, OUTCOMES AND OUTPUTS 4
 - PURPOSE 4
 - OUTCOMES 5
- FORMAT OF THE ONLINE ENGAGEMENT SESSION 5
 - INTRODUCTION 5
 - PROJECT PRESENTATIONS..... 5
 - VEGETATION PLAN 5
 - SOUTH PEDESTRIAN GATE AND STAIRWELL PROJECT 10
 - AMBIENT AIR QUALITY MONITORING STATION (AAQMS) 12
- FEEDBACK PROVIDED AND WHAT WE DID 15
 - VEGETATION PLAN..... 15
 - WHAT WE DID WITH THIS FEEDBACK 17
 - SOUTH PEDESTRIAN GATE AND STAIRWELL PROJECT 18
 - WHAT WE DID WITH THIS FEEDBACK 20
 - AMBIENT AIR QUALITY MONITORING STATION 20
 - WHAT WE DID WITH THIS FEEDBACK 22

FEEDBACK FORMS..... 23

APPENDIX A..... 24

 INVITATION 24

APPENDIX B..... 25

 PRESENTATION PROVIDED TO PARTICIPANTS 25

APPENDIX C..... 26

 FEEDBACK FORMS..... 26

VIRTUAL OPEN HOUSE DETAILS

EPCOR invited members of the public to take part in a virtual open house pertaining to future development and ongoing operations at the Gold Bar Wastewater Treatment Plant (GBWWTP). The focus of the open house was to provide an update to the community and gather input and feedback.

The virtual open house included content on www.epcor.com/goldbar, which outlined specific details about planned projects and ongoing operations. After reviewing this information, participants could provide feedback through online surveys. EPCOR also planned online facilitated engagement sessions, where participants could discuss the project with a representative from the project team.

EPCOR published the open house on their website in mid-September and the content was live until the end of October. The online facilitated engagement sessions over Zoom were held on the following dates and times:

- September 21 – 7:00 p.m. – 9:00 p.m.
- September 22 – 3:30 p.m. – 5:30 p.m.
- September 23 – 7:00 p.m. – 9:00 p.m.

EPCOR employees in attendance at the engagement sessions represented different internal groups such as public and government affairs, operations and project management.

Given the low number of surveys that were completed after participants reviewed the static content available online, this What We Heard Report only pertains to the online facilitated engagement sessions. Although we had a larger number of participants register for the engagement sessions, approximately ten participants attended in total. The general sentiment, input and feedback provided by the public was neutral to positive.

WORK COMPLETED WITH THE COMMUNITY PRIOR TO THE OPEN HOUSE

In early 2019, EPCOR reached out to the community and stakeholders around the Gold Bar Wastewater Treatment Plant (GBWWTP) to understand how we could better operate our facility and plan for future projects while still meeting the needs of the broader Edmonton population and Gold Bar's ongoing operations.

EPCOR organized a subcommittee of citizens called the Citizen Planning Committee (CPC) to take part in three community workshop sessions focused on engaging with participants on operations at the GBWWTP. The outcomes of these workshops were used to plan the projects covered in the online engagement sessions. Copies of the *What We Heard Reports* from these workshops can be found online at www.epcor.com/goldbar.

INVITATION

EPCOR distributed invitations to the virtual open house in several different ways including mail, web content and email. Copies of the invitation can be found in Appendix A, the invitation was distributed as follows:

- A neighborhood postcard was distributed to approximately 24,000 customers residing near GBWWTP in the communities of Gold Bar, Capilano, Highlands, Beverly Heights, Ottewell and Fulton Place.
- An advertisement was posted on www.epcor.com/goldbar.
- This advertisement was shared over Facebook and geographically targeted to the communities around the GBWWTP.
- EPCOR emailed invitations to all members of the Citizen Planning Committee, recreational groups that use Gold Bar Park and Community Leagues.

OPEN HOUSE PURPOSE, OUTCOMES AND OUTPUTS

During the open house, EPCOR demonstrated their commitment to keeping all future development within the existing fenceline at GBWWTP and participants had the opportunity to provide input and feedback on:

- The Vegetation Plan.
- The South Pedestrian Gate and Stairwell project.
- The Ambient Air Quality Monitoring project.

PURPOSE

- Inform stakeholders of all of the above and discuss their input, feedback and concerns.
- Provide stakeholders with opportunities to:
 - ask questions (about the project, future plans, EPCOR & Gold Bar).
 - express concerns and raise issues.
 - discuss options, alternatives and mitigation measures.
- Document any concerns or issues raised.
- Communicate that EPCOR will work directly with stakeholders throughout the process to ensure their feedback is understood and considered. EPCOR also reiterated that public feedback will be reflected in the alternatives developed and we will share how public input influenced the decision.

OUTCOMES

Participants had the opportunity to:

- Provide feedback on our plans to accommodate any future treatment needs at the plant with minimal impacts to the surrounding community.
- Provide ideas and feedback on the three different projects at the GBWWTP.

FORMAT OF THE ONLINE ENGAGEMENT SESSION

The following section outlines the format of the online engagement session and the information reviewed with participants.

INTRODUCTION

During the introduction to the engagement session, EPCOR reviewed the following with participants:

- A land acknowledgement.
- Format of the meeting.
- Participation guidelines.
- An icebreaker activity.
- An update regarding the GBWWTP.

Appendix B includes a copy of the presentation shared with participants.

PROJECT PRESENTATIONS

After the introduction, EPCOR provided three project presentations including the following content:

- Scope of work.
- Proposed timing.
- Shared goals (outcomes) and Design Principles relevant to the project.
- Potential impacts associated with the project.
- Discussion questions.

The presentation can be found in Appendix B. Details about the projects presented and the discussion questions raised with participants are included below.

VEGETATION PLAN

In the spring of 2020, EPCOR hired a third-party contractor to complete a Vegetation Plan for the Gold Bar Wastewater Treatment Plant. The creation of this plan included a site review of the Gold Bar Wastewater Treatment Plant's vegetative cover with the goal of identifying ways to enhance the appearance of the facility from both surrounding communities and within the site. The contractor

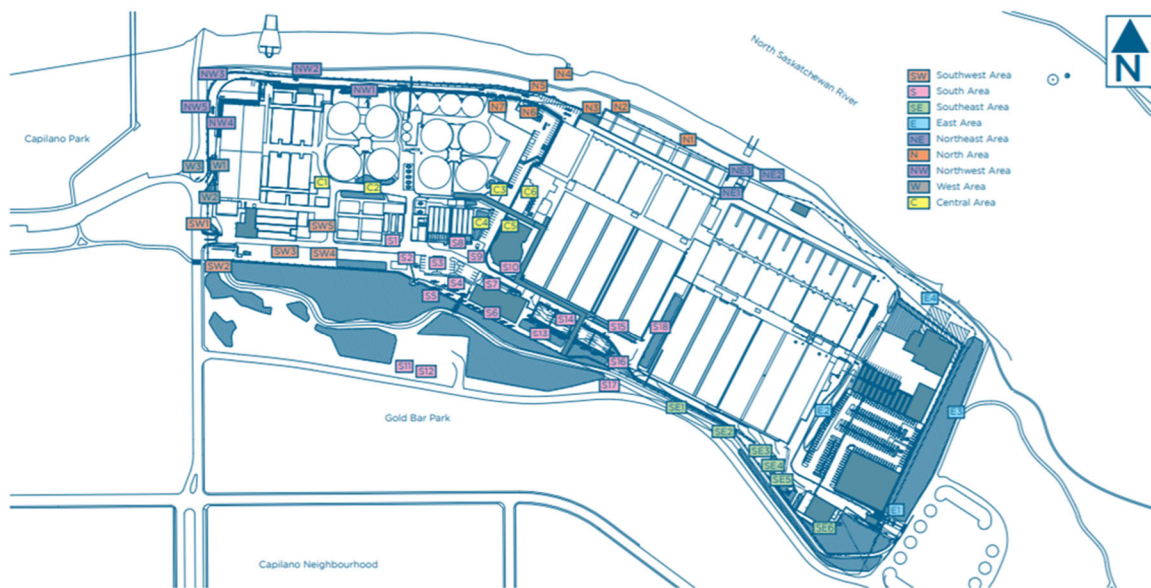
reviewed the site on two separate occasions both when the plant material was in a dormant state (without leaves) and again in early summer once the plant material was in full leaf.

From outside the facility, the perimeter of the site was viewed by traveling along the Gold Bar Park entry road that parallels the south property of the Gold Bar Wastewater Treatment Plant. The vantage points were also identified by walking the trail system that runs along the north, south and east properties of the plant and by walking the boat launch access road running along the western edge of the site.

The tasks associated with this project included assessing how vegetation could be utilized to enhance the visual aesthetics of the plant and how it could be incorporated into new developments on site. As part of this assessment, our contractors met with facility operators to understand the limitations around vegetation, future expansions within the existing fenceline and the extent of vegetation desired. During these meetings odour mitigation was also discussed and became part of the criteria used when selecting plant material.

Our contractor then prepared recommendations for the planting areas identified on the site plan below to serve as guidelines for future planning strategies. The recommendations for each area identified in the report will occur between now and 2060. It is understood that a detailed design will be prepared for each area as they are ready to be developed or enhanced. The timing associated with the recommendations will depend on planned maintenance activities and proposed projects near these areas within the fenceline of the Gold Bar Wastewater Treatment Plant. The community will receive additional information about planting and revegetation plans as part of project specific public engagement initiatives in the future. For revegetation areas located outside of our fenceline, we'll need to coordinate planning activities with the City of Edmonton.

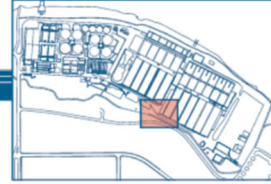
The site plan below highlights the recommended areas (inside and outside the fenceline at the Gold Bar Wastewater Treatment Plant) included in the Vegetation Plan.



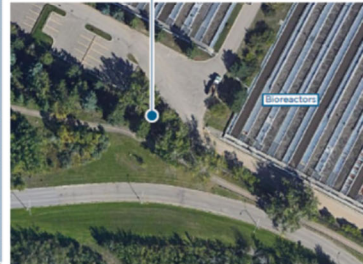


Recommendations: S Area 16

East of Parking Lot

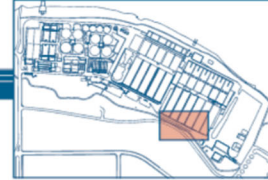


- Addition of conifer trees for additional year round screening
- Maintain setback from fence for security purposes and setback from road to allow for snow storage



Recommendations: SE Area 1

South of South Avenue



- Potential on-site improvements would impact existing lilac
- When plant material is in full leaf the lilacs provide adequate screening with welcome fragrance
- If planting space is maintained, infill empty areas with additional lilacs
- Option to incorporate decorative metal screen with environmental themed cutouts
- Option to replace chain link fence in this area with solid wood fence or stone wall
- Potential to work with City to add canopy trees (potted material) or shrub material between fence and trail (approximately 4-5' planting space)



Canopy Trees



Ash



Linden in fall



Littleleaf Linden



Elm



Bur Oak



Bur Oak Leaves

Shrubs



Amur Maple in the fall



Rose Glow Barberry



Diablo Ninebark



Pygmy Caragana



Cotoneaster in the fall



Silver Buffaloberry



Dart's Gold Ninebark



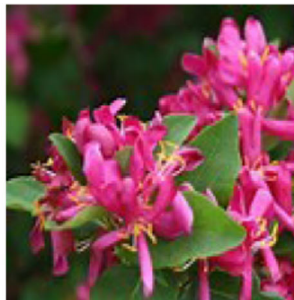
Hansa Rose



Juniper



Honeysuckle



Honeysuckle flowers



Mockorange



Mockorange flowers



Goldflame Spirea



Dwarf Korean Lilac



Lilac



Russian Almond



Spirea flowers



Mugo Pine

Discussion Questions posed to participants during the online engagement sessions:

- Are we missing any locations on site where we should be focusing on revegetation?
- Of the locations shown, where do you think EPCOR should prioritize planting on site?
- Do you have any recommendations about how EPCOR should select specific species for planting areas across the facility?
- Do you feel that EPCOR should be planting vegetation outside of our fenceline when vegetation removal is required inside our facility? Or should replacing vegetation inside our fenceline be a priority?

Note – Planting outside of our fenceline would require collaboration with the City of Edmonton.

Do you have any additional feedback in regards to EPCOR’s vegetation management plan?

SOUTH PEDESTRIAN GATE AND STAIRWELL PROJECT

Overview

EPCOR gathered preliminary feedback on the feasibility of:

- Modifying a pedestrian gate at our fenceline.
- Installing a wooden staircase or steps outside our fenceline to connect the pedestrian gate referenced above and the multi-use trail located south of the facility.

The project increases the safety of staff and community partners using this entrance to access the Gold Bar Wastewater Treatment Plant. Our records indicate that over the past couple of years we had the following number of visitors coming to site for tours of the facility:

- 2018 – 35 tours (643 people) and 4342 students through RiverWatch Alberta.
- 2019 – 43 tours (702 people) and 4040 students through RiverWatch Alberta.

The students that tour the facility through the [RiverWatch Alberta program](#) get out of their rafts at the boat launch and walk on the paved multi-use pathway to the pedestrian gate mentioned above. As shown on the image below, minimal undergrowth removal would be required to install the stairway. We would replace removed vegetation in alignment with the recommendations included in our [Vegetation Plan](#). The design of the stairway or steps would minimize impacts to existing terrain and ground conditions. Based on public feedback, if this project were to proceed it would be initiated in 2021.

Site Plan



Stairway location: looking towards the Gold Bar Waste Water Treatment Plant



Stairway design options

Participants were shown design options A and B for the proposed stairway.

Design Option A: Wooden Staircase



Design Option B: Wooden Steps

We're working with the City of Edmonton to determine if Design Option B is a feasible alternative.



Discussion Questions posed to participants during the online engagement sessions:

- Do you have any concerns with the alignment?
- If a stairway is installed, would you prefer that the undergrowth removed would be replanted inside the fence line or outside in the river valley?
- Do you have a preference between Design Option A and Option B?
- Do you have any visual concerns?
- If so, how could we better integrate this development?
- Do you have any additional feedback about the proposed development?
- How would you like to be informed of project updates in the future?

AMBIENT AIR QUALITY MONITORING STATION (AAQMS)

In alignment with EPCOR's long-term plans and commitment to continued investment in [odour mitigation and reduction](#), we plan to install an ambient air quality monitoring station near the Gold Bar Wastewater Treatment Plant. During previous public engagement activities, community members told us that they supported additional air monitoring, and that the air monitor should be located in between the edge of the plant and nearest residences. Our operating approval from Alberta Environment and Parks also requires that an Ambient Air Quality Monitoring Station is installed between the Gold Bar Wastewater Treatment Plant fenceline and the Gold Bar community.

The proposed Ambient Air Quality Monitoring Station will allow us to:

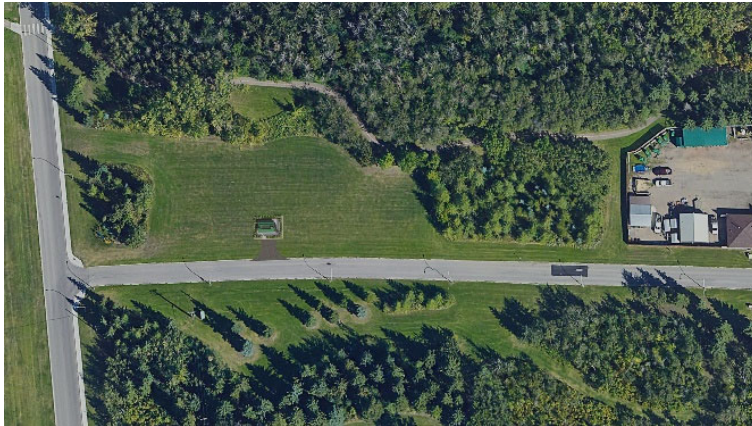
- Continuously monitor emissions from site.
- Use the data measured to make future changes at site to further reduce odours.

During the online engagement sessions we asked for feedback about the specific site selected (as shown below) and the different features the community would like incorporated into the design of the Ambient Air Quality Monitoring Station. Amenities such as seating, educational information / signage, bike rack, etc. can be built into this station to suit community interests.

Conceptual renderings of Ambient Air Quality Monitoring Station

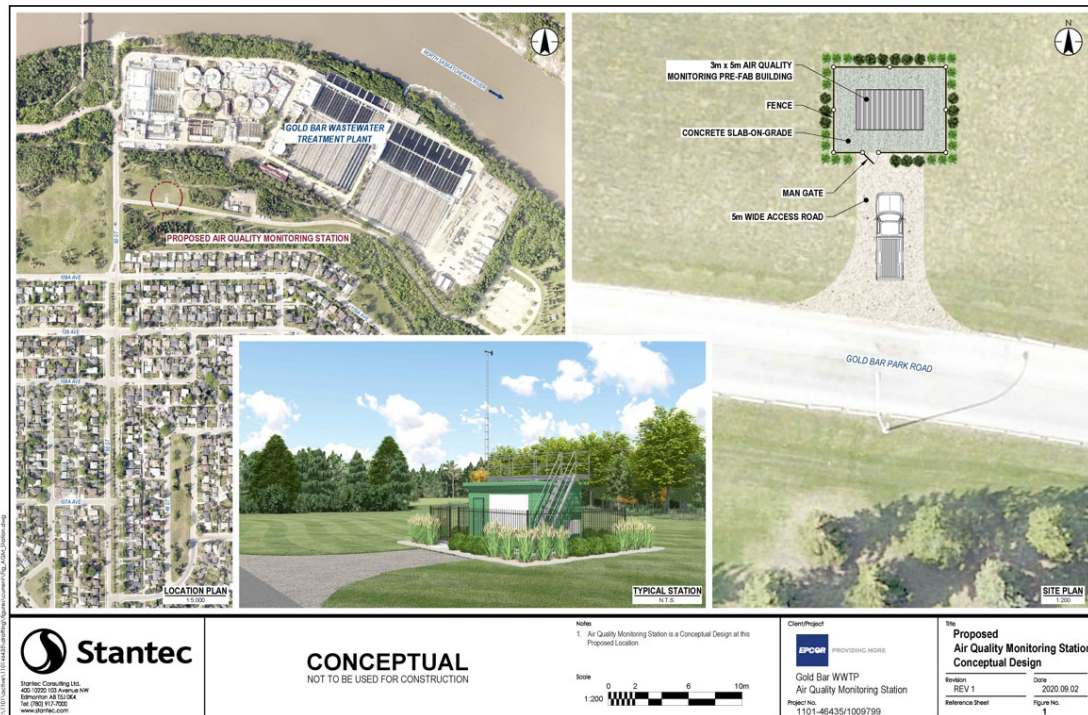
These renderings are conceptual in nature and could change as the project continues to evolve throughout design, further engagement and engineering. Two different design options were shown for the community to provide input and feedback.

A bird eye's view of the conceptual Air Quality Monitoring Station, showing approximate size and location.



Site plan

We provided information and gathered feedback from the Community about the Odour Monitoring Station in 2019 through workshops, newsletters and our open house. We've also shared different options for the location of the AAQMS and gathered additional input from the Community Liaison Committee (CLC) in 2019 and 2020.



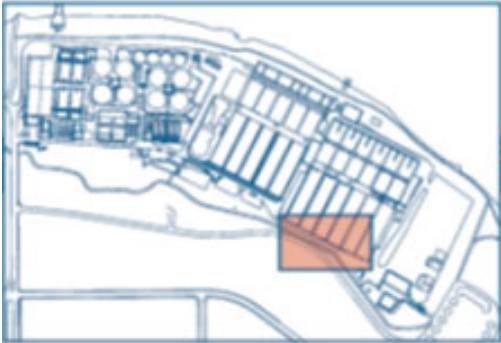
Discussion Questions posed to participants during the online engagement sessions:

- What amenities would you like to see incorporated?
 - *Examples could include seating, solar-powered phone charging stations, air compressor to inflate bike tires, educational information/signage.*
- How would you like to use the data captured from the air quality monitoring station?
- Would you prefer regular reporting on odour emissions, or to only receive information when odour thresholds are exceeded?
- What format would this information be best communicated? (e.g. txt message, email, monthly newsletter).
 - *Note: In the very unlikely event that odour levels were ever a health concern, EPCOR would notify the public in accordance with protocols and procedures included in our Emergency Response Plan.*
- Is there additional information about the project that you would like to receive?
- How would you like to be informed of project updates in the future?

FEEDBACK PROVIDED AND WHAT WE DID

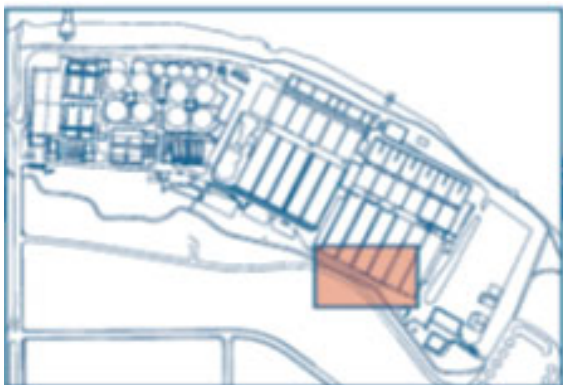
During the engagement sessions, EPCOR representatives documented feedback from participants in a workbook while sharing their screen. The following input and feedback was documented during the sessions. Further, we've included a section below to address what decisions EPCOR made with the feedback and input provided by the Community.

VEGETATION PLAN



What canopy trees would you like to see planted in this area?

- All species that were recommended are native species (endemic to Edmonton's river valley).
- I trust in EPCOR to make the right decision.
- Linden, oak and elm are favourites, but any would work.
- Choose a species that can absorb odour.
- Trees with odour mitigation (i.e. those with flowers).
- No trees with berries/ nuts that could fall onto path.
- Variety is best- no monoculture.
- Red brick buildings are nice.
- Nothing with poplar fluff (allergies).



What shrubs would you like to see planted in this area?

- The bottom three are preferred.
- Lilacs (see page 1).
- They all look lovely.
- All good choices.
- Those that bloom for a long time.
- Species that are attractive to bees.
- Spiraea (because they flower for a long time).

Are we missing any locations on site where we should be focusing on revegetation?

- Like the focus on the SE area (due to presence of walking trail).
- Looks like it is covered on this plan.
- Is educational to allow some visibility to bioreactors.

Of the locations shown, where do you think EPCOR should prioritize planting on site?

- Focus to screen the fence line area with the aeration lagoons.
- Agree!
- SE (green rectangles) because it is the most visible.
- SE and E rectangles (where the construction is).

Do you have any recommendations about how EPCOR should select specific species for planting areas across the facility?

- With hardiness in our winter, choose plants with roots that are less likely to disrupt trails.
- Vegetation experts will make right decisions.
- Shielding fence line is most important factor (i.e. more important than discussion of inside versus outside fence line).

Do you feel that EPCOR should be planting vegetation outside of our fence line when vegetation removal is required inside our facility? Note: Planting outside of our fence line would require collaboration with the City of Edmonton.

- Shielding fence line is most important.
- GBWWTP is subject to City of Edmonton Bylaw 7188 (“River Valley Bylaw”).
- Should be cooperation with the City on vegetation outside the fence line.
- Spruce have higher branches as they age.
- Aspen by river considered weed trees – new plantings may look out of place.
- Should add some vegetation outside fence line in SE.
- You should consider vegetation that is natural to the area.
- EPCOR should incorporate vegetation and plants that First Nations people could come to harvest. It is a large area and natural to the river valley. The types of plants you should consider are:

- Bitterroot, bear berries, cedars, sweet pine, those kinds of things that are used by First Nations peoples in medicines, offerings, that could be an area that they could hold that, and they would be native to the area. Even EPCOR could have some sort of a display unit or something during the harvest.
- Lodgepole pine is something Indigenous peoples could harvest for teepee poles.
- They get very tall. 15 poles per teepee. Out of that, you'd need a thicker one, and then a few shorter ones.
- The other tree they use is the Tamarack tree.
- Don't take invasive species and put non-Indigenous plants. We want to work together and use native plants, within the region, and think about what they can be used for. Want to bring in more of the insects that help this world grow.
- EPCOR should also consider harvesting within the fenceline.

Or should replacing vegetation inside our fence line be a priority?

- Shielding fence line is most important.
- Mostly inside fence line (except where limited by roads/ bike path).

How would you like to be informed of project updates in the future?

- Email!
- Combine email with website updates.

Do you have any additional feedback in regards to EPCOR's vegetation management plan?

- EPCOR to look into recommendations for species that will withstand brush/ wild fire.
- Should keep it natural and aligned with local vegetation.
- Will improve the vibe.
- Within the plant, what is the environment like in the area? We don't want people picking plants that are poisonous.

WHAT WE DID WITH THIS FEEDBACK

- This feedback has been provided to the project management team at EPCOR.
- When changes are made in the area used as a case study and we are looking to plant new vegetation or species, we will use the feedback provided to guide our planting plans.
- Although we understand that participants felt there were benefits associated with using vegetation as screening between those recreating in the area and the facility, we agree that there is value in ensuring some visual accessibility into the plant to promote education and awareness. This feedback has been provided to our project management team and will be used when putting together future planting plans.
- EPCOR will prioritize planting on the SE side of the facility, when possible.

- EPCOR will also explore opportunities with the City of Edmonton to plant outside of our fenceline. In these cases, EPCOR will work with the City of Edmonton and Indigenous Communities to explore plant species that may offer harvesting opportunities.
- EPCOR will offer the opportunity for Indigenous Communities to collect the trees removed from the facility.
- EPCOR created a place on the Gold Bar website where individuals can provide their email addresses for future updates about the facility.

SOUTH PEDESTRIAN GATE AND STAIRWELL PROJECT

Do you have any concerns with the location?

- Potential for pedestrian/ trail user conflict (e.g. cyclists/trail riders interrupted by stairwell users).
- Ensure that the stairs and any hand railings not pose an obstacle to cyclists.
- Should put up signage for trail users and/or stairwell users to minimize conflict.

If a stairway is installed, would you prefer that the undergrowth removed would be replanted inside the fence line or outside in the river valley?

- The amount of plants is minimal, do not see an impact.
- No preference.

Do you have a preference between Design Option A and Option B?

Session 1

Design A: 0

Design B: IIII (because it has better traction, because railings are too much in A and may attract public to unauthorized space).

No Preference: I (experts can advise on safety and maintenance).

Session 2

Design A: I (option B – the rocks will spill out overtime making it uneven, or disappear. Or fill with water. Ok if maintained, but will require more maintenance. Hand rail is important).

Design B: II (If not used in the winter. If used year-round, wooden stairs would be easier to shovel. Aesthetically more pleasing, but needs hand rail).

Session 3

- The one thing that I don't see, both those options are not accessible for people with disabilities. Accessible design should be taken into consideration.
- This is my greatest concern, with elders, with kids with disabilities, there are ways and means that we can incorporate it and so that they can enjoy it too. Who knows, someone might have been a botanist in their younger days, and now they can't go down.

- Option A is better, where you could incorporate it with a person with disabilities, or even have it go down the middle. You could put in the middle so that you don't have to reconstruct it.
- Option B- not good, nothing to grip on to. Especially during the winter, with weather. It would get muddy and sticky. A lot of snow. Maintenance wise it will take a lot more to get people to walk down it easily- cost wise.

Questions: Who will maintain (EPCOR or COE)? Likely EPCOR as stairs are for EPCOR's use.

Do you have any visual concerns?

- Stairs will blend in with the area, looks good with natural space.
- May want to consider materials other than wood for longevity (option B will eventually rot, even with paint/pressure treatment).
- Both options look good from visual perspective.
- The gate is visible currently, so it's not a real change.
- No concerns.

If so, how could we better integrate this development?

- Keep the design simple. Simple is good!
- Should not have any vegetation too close to the stairwell – will grow into it overtime and impede passage.

Do you have any additional feedback about the proposed development?

- Who does EIA for project? City of Edmonton does an assessment to determine what type of study is required, and EPCOR follows direction provided.
- Would it be necessary to throw sand on the stairs? EPCOR should evaluate as this can cause slips/ falls.
- Wood stairs are slippery in the winter.

How would you like to be informed of project updates in the future?

- Email!
- Website helpful as can then share links with others.
- Email (x2).
- Website for updates.
- Sign when it is being installed/ give updates to passersby.
- Email better than flyers (x2).
- Email is more environmentally friendly, but is tricky as you then need to have an email distribution list.
- Any information we get about your other water treatment plants, it's always sent out with lots of time to attend. It's good.
- Good now. When you send me the survey I can put my feedback in there.

***Are there any other “Shared Outcomes & Design Principles” that we need to consider for this project?
If so, which ones?***

- Those selected look good.
- Thumbs up!

WHAT WE DID WITH THIS FEEDBACK

- EPCOR has been working with the City of Edmonton to ensure that project design mitigates the potential for interactions between pedestrians and cyclists where the proposed stairway intersects with the existing multi-use trail, to the extent reasonably practicable. The City of Edmonton has planned to add signage both east and west of the stairway.
- EPCOR selected the stairway design option.
- Project updates will be included in Community newsletters and on our website.
- Given the design considerations and field conditions associated with the development, EPCOR will not be able to incorporate accessible design measures. Those with accessibility concerns can access the site at an alternate entrance where we are currently installing wheelchair accessible sidewalks.

AMBIENT AIR QUALITY MONITORING STATION

Do you have any feedback about the designs presented?

- Looks good.
- The vegetation surrounding the station (as shown) looks great.
- Style of fence shown is good.
- Like blue over the green.
- Odor is not going to fade away, no matter what looks better with vegetation.
- Prefer “blending in” versus “standing out” (x2)
- Green (like Parks Canada).
- No matter what colour is chosen it won’t blend in though out changing seasons – should choose something aesthetically pleasing year round (green will stand out in the winter, blend in during the summer).
- Blue looks out of place. Green fits in better with the surrounding area. As far of the design, it’s functional. That’s what you need for your instruments that it take.
- You could put murals on it, instructional.
- Design it as a tipi and have your odour monitoring station come out the top.
- This is an opportunity to teach the public about First Nations and Indigenous peoples.

Questions that EPCOR should consider in future plans for the project:

- What will this station be called?
- Where is the Goldbar station on the SIA map?
- Which way do the winds go?

- Is the odour actually harmful to health? Or just smelly?

Are there any design elements you would recommend to better integrate the facility? Think about landscaping, fencing, and/or colour of the station...

- Analysis of winds (i.e. winds heading in a northern direction).
- Educational component would be nice to incorporate.
- Providing education about what the station does (e.g. do you know what this station does?).
- Graffiti resistant design.
- Prevailing winds (come from NW).
- Could the building actually show the odour readings?
- Art/ painting on walls.
- Educational signage, readings, combined with cloud motif.
- Anything that doesn't impede the functionality of the station.

What amenities would you like to see incorporated? Examples could include seating, solar-powered phone charging stations, air compressor to inflate bike tires, educational information/signage.

- Educational information/ signage (see page 13).
- Real time update of continuous data using LCD screen.
- Building should show the readings (many agree).
- Add educational signage (see page 13).
- Bike repair stuff.
- Cold beer tap ☺ (x2) – red wine!

How would you like to use the data captured from the air quality monitoring station?

- Real time updates of that continuous data.
- Creating regular community reports and/or flyers (i.e. show the community that continuous improvement is happening).
- Wind chill for winter users. Humidex for summers.
- Implement reporting protocol to notify nearby residents (note: protocol exists currently).
- Add to SIA site so that it can be viewed on their website.
- Look up data similar to current display on SIA site. Eventually combine with their site. Current reporting requirements are good. Would be good to see on website until incorporation into SIA.
- Use siren warning if there is a H₂S or Cl leak in progress.
- Yes, definitely. On behalf of Cold Lake First Nation, that would be very important to us.
- EPCOR should explore making the information available online or through an app.

Would you prefer regular reporting on odour emissions, or to only receive information when odour thresholds are exceeded?

Session 1

Regular: I

Exceedances: 0

Session 2

Regular: 0

Exceedances: 11 (combined with regular regulatory reporting through SIA)

Note: EPCOR is required to report if it is a health issue. Emergency protocol will be implemented. Data from these stations are reported regularly to City of Edmonton and SIA.

What format would this information be best communicated? (e.g. txt message, email, monthly newsletter). Note: In the very unlikely event that odour levels became a health concern, EPCOR would notify the public in accordance with protocols and procedures included in our Emergency Response Plan.

- Reports and/or flyers (similar to postcard received for this event).
- Text alerting if health affecting.
- Website.
- Siren (if H2S/Cl leak).

Is there additional information about the project that you would like to receive?

- Final concept and start date for build (and completion).
- We would like to see how you incorporate our feedback about designing the AAQMS in the shape of a tipi.
- You could incorporate an Indigenous artist or architect.

How would you like to be informed of project updates in the future?

- Coming soon poster in the area.
- Think of those who access the site (e.g. where we are going to put the station).
- Multiple channels of communication seem to be required these days.
- Can't do too much given history of the area – can see it from 50th St as well as entry into park so is highly visible. Could be confused with parking lot project.

Are there any other "Shared Outcomes & Design Principles" that we need to consider for this project? If so, which ones?

- Looks good (x2)

WHAT WE DID WITH THIS FEEDBACK

- After assessing the feedback provided, EPCOR thought the AAQMS provided an opportunity to share part of the history and culture of the Indigenous peoples who used these lands and adjacent waters long before Edmonton became incorporated as a city. Our history is interwoven with the development of Edmonton, the histories, and legacies of interaction

between settlers and Indigenous peoples, and the siting of our facilities within Edmonton. The banks of the North Saskatchewan River, where our two water treatment plants and our wastewater treatment plant are located, have been gathering places since time immemorial.

- We respect the histories, languages, and cultures of First Nations, Métis, Inuit, and all Indigenous peoples across North America, whose presence continues to enrich our vibrant community. We also recognize that we need to work collaboratively and in the spirit of reconciliation with Indigenous governments and peoples as long as we continue to operate in areas that hold these significant ties.
- In support of recognizing these important Indigenous ties to this area, EPCOR will be issuing a request for proposals to adorn the site with Indigenous art and landscaping that will enhance the site and inform those who use the area.
- If the AAQMS becomes part of the SIA, data will be available on their website.
- If the AAQMS does not become part of the SIA, EPCOR will ensure that the emissions data is publicly available.
- Project updates will be included in future newsletters, on our website and discussed with the Community Liaison Committee (CLC).
- EPCOR will be posting project related signage prior to construction.

FEEDBACK FORMS

After the online engagement sessions, participants had the opportunity to provide additional feedback through online surveys about the following topics:

- The Vegetation Plan
- The South Pedestrian Gate and Stairway Project
- The Ambient Air Quality Monitoring Station (AAQMS)
- General Feedback about the Engagement Sessions

One participant provided feedback about the AAQMS and eight participants provided general feedback about the engagement sessions. The feedback provided can be found in Appendix C.

APPENDIX A

INVITATION

WE WANT TO HEAR FROM YOU AT OUR VIRTUAL OPEN HOUSE

Being a good neighbour is important to us.

Last year we held community workshops, an open house and attended a number of events in your neighbourhood to share our commitment to keep all future development within our existing fenceline at the Gold Bar Wastewater Treatment Plant.

We would now like your feedback on a number of projects and maintenance initiatives at the facility. These developments have been planned in alignment with the shared outcomes and design principles collaboratively created by EPCOR and the community.

Please join us for an online open house to discuss: our vegetation master plan; a proposed ambient air quality monitoring station; pedestrian access improvements on site; and several other projects and facility updates.

These projects will be shared on our website (www.epcor.com/goldbar-engage) on **September 11, 2020** and we invite you to provide feedback until **September 30, 2020**. We will also be hosting facilitated zoom sessions to discuss several aspects of these developments.

Sign up for these sessions online by September 18, 2020 at: www.epcor.com/goldbar-engage

COLLABORATING ON SHARED OUTCOMES

We're better together

During engagement with the community last year, we collaborated on a number of exercises that helped to create a list of common goals we call "shared outcomes". These shared outcomes will help guide our projects and planning initiatives. They include:

Quality of Life

The Gold Bar Wastewater Treatment Plant is operated, maintained and updated in a way that reduces impacts and improves quality of life, including odour, noise and enjoyment of parks.

Safety

Community, public and worker safety are protected.

Relationship

An honest, transparent trusting relationship is developed between us and you.

Environment

Pollution is prevented and our impacts on air, land, water climate and ecosystems are reduced.

Reliable, Responsible and Sustainable

The Gold Bar WWTP is designed, maintained and operated in a prudent and responsible manner.



To learn more about our workshops and general operational updates please visit epcor.com/goldbar

APPENDIX B

PRESENTATION PROVIDED TO PARTICIPANTS



A Virtual Welcome!

Gold Bar Wastewater Treatment Plant
Engagement Session
September, 2020

1

Today's Agenda

- Format of the Session
- Participation Guidelines
- GBWWTP Update
- Breakout Discussion #1 – *Vegetation Plan*
- Breakout Discussion #2 - *South Pedestrian Gate and Stairwell*
- Break (5 minutes)
- Breakout Discussion #3 – *Ambient Air Quality Monitoring Station*
- General GBWWTP Question and Answer Period
- Closing Remarks

2

PROVIDING MORE 

Format

- Three project discussions so participants can provide feedback about specific developments on site.
 - We will provide a brief overview of the project and participants will have five minutes to ask questions.
 - Then we will walk through specific discussion questions and document feedback from the group.
- We will be sending out follow-up surveys after the session.

3

PROVIDING MORE 

Participation Guidelines – Online Forum

- Open and Transparent Communication
 - To cut down on background noise, all participants will be kept on mute.
 - While EPCOR is presenting, participants can ask questions through the chat room.
 - During project discussions, participants can use the raise hand feature (EPCOR will invite you to unmute yourself) or the chatroom to provide feedback.
 - We are recording this engagement session and the dialogue in the chatroom will be automated into a transcript once the meeting is done. Both options are great ways to provide feedback!
- Listen to understand
 - If a certain topic of discussion is becoming too detailed or lengthy and participants are unwilling to end the conversation after being asked to finish, we may have to place participants on mute. This will only be done after a request has been made to wrap up a conversation. EPCOR needs to ensure effective time management.

4

PROVIDING MORE 

Icebreaker!

- Icebreaker – Tell us your name, connection to the GBWWTP and favourite season in the chatroom!

5

PROVIDING MORE **EPCOR**



Gold Bar WWTP General Update

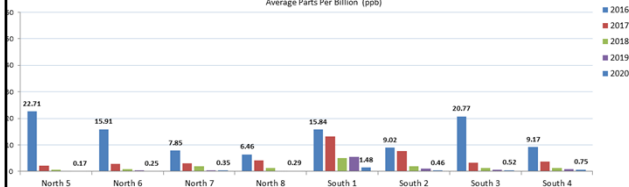
6

2020 Spot Monitoring Highlights



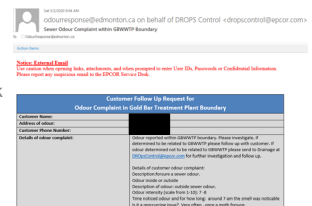
- In 2019 and to date in 2020, our monitoring systems have recorded zero odours in exceedance of regulatory standards.
- This information is shared monthly on our website.

Fence Line H2S Monitoring
Average Parts Per Billion (ppb)



Odour Reporting Process

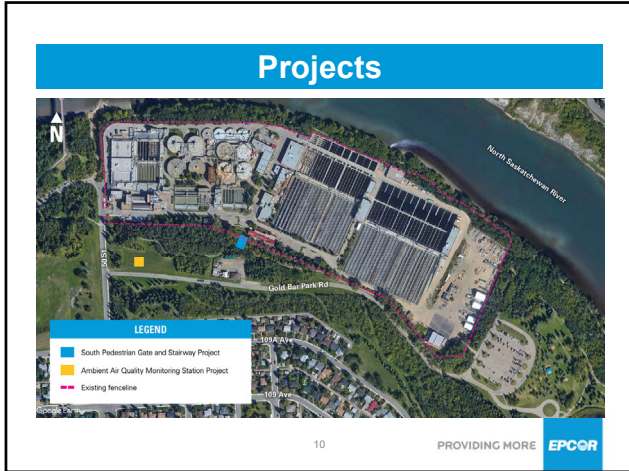
- Odour reporting is completed through EPCOR (412-4500) as opposed to the City of Edmonton (311).
- So you can see what the back end of an odour report looks like, it typically includes:
 - Customer address
 - Description of the odour detected, inside / outside
 - Relative intensity (1-10),
 - Date and time the odour was detected and duration of odour



Example Email of Odour Complaint

8

PROVIDING MORE **EPCOR**

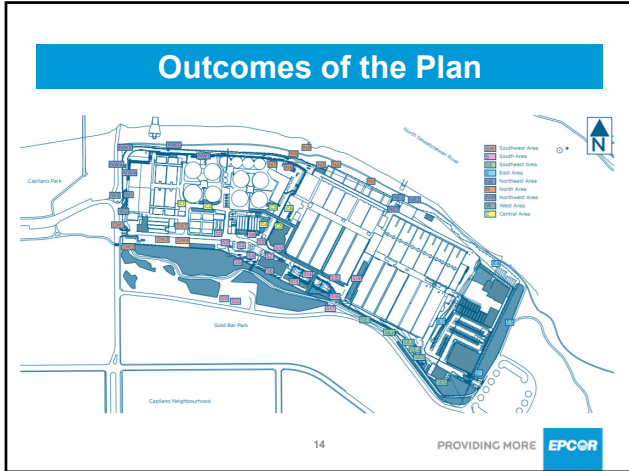


Scope

- Included a site review of the GBWWTP's vegetative cover from both surrounding communities and within the site.
- The contractor reviewed the site on two separate occasions:
 - When the plant material was in a dormant state (without leaves).
 - Again in early summer once the plant material was in full leaf.

Goals of the Vegetation Plan

- Address how vegetation could be utilized to enhance the visual aesthetics of the plant and incorporated into new developments.
- Recognize the operational limitations around vegetation, future development within the existing fenceline and the surface area required for desired vegetation.
- Consider odour mitigation.



Recommendations: S Area 16 East of Parking Lot

- Addition of conifer trees for additional year round screening
- Maintain setback from fence for security purposes and setback from road to allow for snow storage

16 PROVIDING MORE **EPCOR**

Recommendations: SE Area 1 South of South Avenue

- Potential on-site improvements would impact existing lilac
- When plant material is in full leaf the lilacs provide adequate screening with welcome fragrance
- If planting space is maintained, infill empty areas with additional lilacs
- Option to incorporate decorative metal screen with environmental themed cutouts
- Option to replace chain link fence in this area with solid wood fence or stone wall
- Potential to work with City to add canopy trees (potted material) or shrub material between fence and trail (approximately 4-5' planting space)

17 PROVIDING MORE **EPCOR**

Planting Discussion – Canopy Trees

17 PROVIDING MORE **EPCOR**

Planting Discussion – Shrubs

Amur Maple in the fall Rose Glow Barberry Classic Hibiscus

Podary Carabana Columbian in the fall Shear Buffaloberry

U.S.'s Wood Rosemary Variegated Holly Juniper

Planting Discussion – Shrubs

Honeysuckle Honeyuckle flowers Mockorange Mockorange flowers

Goldflame Spirea Dwarf Korean Lilac Lilac

Robust Almond Spirea flowers Maple Pine

Discussion

- Are we missing any locations on site where we should be focusing on revegetation?
- Of the locations shown, where do you think EPCOR should prioritize planting on site?

20 PROVIDING MORE

Discussion

- Do you have any recommendations about how EPCOR should select specific species for planting areas across the facility?
- Do you feel that EPCOR should be planting vegetation outside of our fenceline when vegetation removal is required inside our facility? Or should replacing vegetation inside our fenceline be a priority?
 - Note – Planting outside of our fenceline would require collaboration with the City of Edmonton.
- Do you have any additional feedback in regards to EPCOR's vegetation management plan?

21 PROVIDING MORE

Discussion

VEGETATION PLAN

Shared Outcomes and Design Principles
 EPCOR has identified the following Shared Outcomes and Design Principles associated with this project. At the bottom of this page you will have the opportunity to fill out a survey to provide feedback about the Shared Outcomes and Design Principles selected.

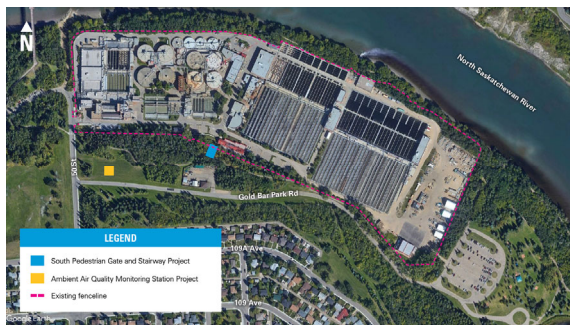
	QUALITY OF LIFE	SAFETY	RELATIONSHIP	ENVIRONMENT	RELIABLE, RESPONSIBLE, SUSTAINABLE
Shared Outcomes	Accelerate carbon reduction	Continuously improve safety	Communicate openly	Continuously improve environmental performance	Continuously maintain reliable operations
	Remain within the existing fence-line	Ensure safe movement on site	Align operating practices	Reduce environmental impacts	Plan for a range of scenarios
Design Principles	Prevent accidents to labour and visitors	Improve worker hygiene and safety	Engage regularly	Increase efficiency	Proactively manage process to resources
	Restore disturbed vegetation	Protect public safety from site related traffic	Share options and capture designs	Engage employees and stakeholders	
	Mitigate temporary impacts				

- Do you agree with the Shared Outcomes and Design Principles selected by EPCOR?



Project #2 – South Pedestrian Gate and Stairway

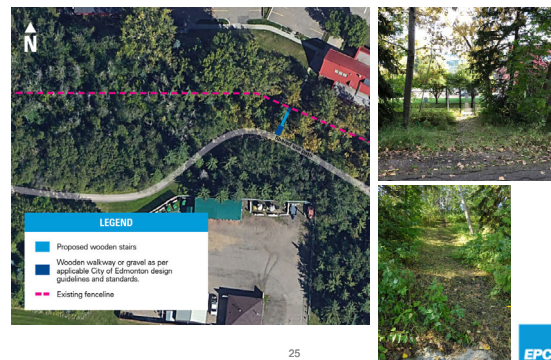
Project Location



LEGEND

- South Pedestrian Gate and Stairway Project
- Ambient Air Quality Monitoring Station Project
- Existing fence-line

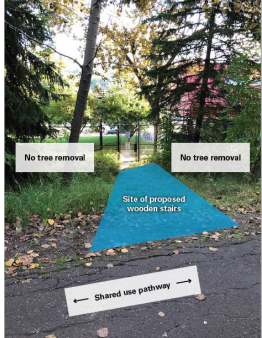
Site Plan




LEGEND

- Proposed wooden stairs
- Wooden walkway or gravel as per applicable City of Edmonton design guidelines and standards
- Existing fence-line



Stairway Location



26


PROVIDING MORE 

Design Options

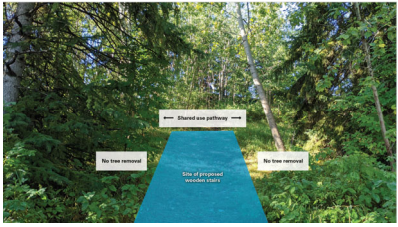



Design Option A – Wooden Stairway
Design Option B – Wooden Steps

27


PROVIDING MORE 

Discussion

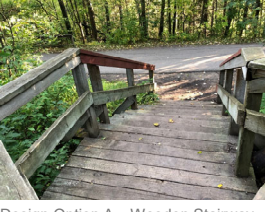
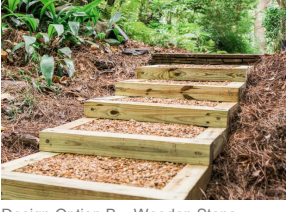


- Do you have any concerns with the location?
- If a stairway is installed, would you prefer that the undergrowth removed would be replanted inside the fenceline or outside in the river valley?

28

PROVIDING MORE 


Discussion

Design Option A – Wooden Stairway
Design Option B – Wooden Steps

- Do you have a preference between Design Option A and Option B?
- Do you have any visual concerns?
 - If so, how could we better integrate this development?

29

PROVIDING MORE 

Discussion

- Do you have any additional feedback about the proposed development?
- How would you like to be informed of project updates in the future?

30 PROVIDING MORE

Discussion

SOUTH PEDESTRIAN GATE AND STAIRWAY

Shared Outcomes and Design Principles
EPCOR has identified the following Shared Outcomes and Design Principles associated with this project. At the bottom of this page you will have the opportunity to fill out a survey to provide feedback about the Shared Outcomes and Design Principles selected.

Shared Outcomes	QUALITY OF LIFE	SAFETY	RELATIONSHIP	ENVIRONMENT	RELIABLE, RESPONSIBLE, SUSTAINABLE
Assessive other relations	Continuously improve safety	Communicate openly	Continuously improve environmental performance	Continuously maintain in-site operations	
Review water for reclaiming feasibility	Ensure safe movement on site	Align operating protocols	Reduce environmental impacts	Plan for a range of scenarios	
Prevent intrusions to roads and trails	Improve worker hygiene and safety	Engage regularly	Increase reactivity	Proactively manage impacts to residents	
Reverse disturbed vegetation	Protect public safety from site-related traffic	Share options and address designs	Engage employees and stakeholders		
Mitigate temporary impacts					

■ Do you agree with the Shared Outcomes and Design Principles selected by EPCOR?

31 PROVIDING MORE




Project #3 – Ambient Air Quality Monitoring Station

32

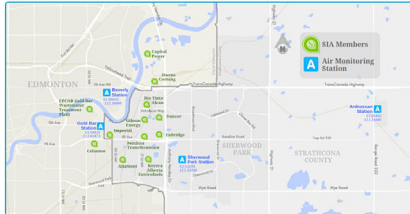
Odour Generation on Site

- Majority of the odour generation comes from the preliminary and primary treatment buildings (red area), with secondary sources from solids treatment buildings (orange area)



33

Strathcona Industrial Association

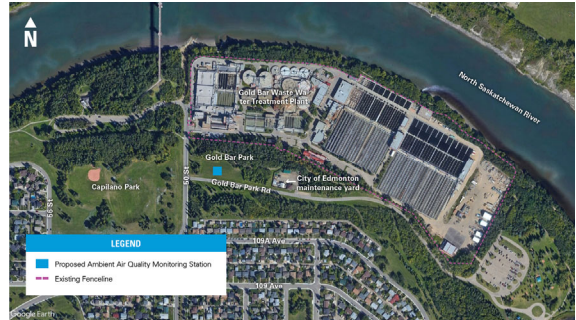


- SIA was formed in 1974.
- SIA is endorsed by Alberta Environment and Parks, who also audits the stations regularly.
- EPCOR is a member of the SIA.

34

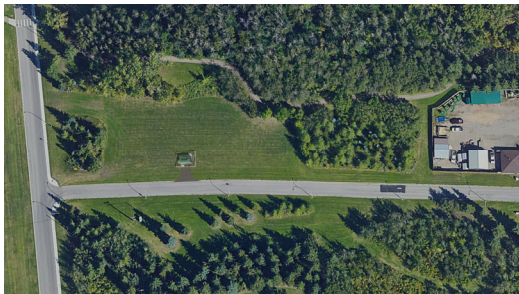
PROVIDING MORE **EPCOR**

Location Selected for AQM Station



36

Conceptual Renderings



37

PROVIDING MORE **EPCOR**

Conceptual Renderings



38

PROVIDING MORE **EPCOR**

Conceptual Renderings

39 PROVIDING MORE **EPCOR**

Discussion

- Do you have any feedback about the designs presented?
- Do you have any visual concerns?
- Are there any design elements you would recommend to better integrate the facility, including landscaping, fencing, and/or colour of the station?
 - What about amenities you would like to see incorporated? Examples could include seating, solar-powered phone charging stations, air compressor to inflate bike tires, educational information/signage.

40 PROVIDING MORE **EPCOR**

Discussion

- How would you like to use the data captured from the air quality monitoring station?
 - Would the community prefer regular reporting on odour emissions to better understand the operations, or only receive information when odour thresholds are exceeded?
 - What format would this information be best communicated? (i.e. website or email).
 - Note – In the very unlikely event that odour levels were ever a health concern, EPCOR would be notifying the public in accordance with protocols and procedures included in our Emergency Response Plan.
- Is there additional information about the project that you would like to receive?
- How would you like to be informed of project updates in the future?

41 PROVIDING MORE **EPCOR**

Discussion

AMBIENT AIR QUALITY MONITORING STATION
Shared Outcomes and Design Principles
 EPCOR has identified the following Shared Outcomes and Design Principles associated with this project. At the bottom of this page you will have the opportunity to fill out a survey to provide feedback about the Shared Outcomes and Design Principles indicated.

	QUALITY OF LIFE	SAFETY	RELATIONSHIP	ENVIRONMENT	RELIABLE, RESPONSIBLE, SUSTAINABLE
Shared Outcomes	Accelerate odour reduction	Continuously improve safety	Communicate openly	Continuously improve environmental performance	Continuously maintain reliable operations
	Remain within the existing fence-line	Ensure safe movement on-site	Align operating protocols	Reduce environmental impacts	Plan for a range of scenarios
Design Principles	Prevent increases in odour and noise	Improve worker hygiene and safety	Engage regularly	Increase resiliency	Prioritize strategic impacts to mitigate
	Restore disturbed vegetation	Protect public safety from site-related traffic	Share options and optimize designs	Support employees and stakeholders	
	Mitigate temporary impacts				

- Do you agree with the Shared Outcomes and Design Principles selected by EPCOR?

42 PROVIDING MORE **EPCOR**



Question and Answer Period

Review of General GBWWTP
Questions

43

Thank you!

- Thank you for attending!
- Next Steps
 - Surveys from EPCOR
 - Responses to questions throughout the evening
 - What We Heard Reporting

44

PROVIDING MORE 

APPENDIX C

FEEDBACK FORMS

The following feedback was provided by eight participants after they attended an online engagement session.

1. How did you hear about the engagement session?
 - a. Postcard – 3
 - b. Word of mouth – 2
 - c. Other – 5 (invitation to Cold Lake First Nations, email from EPCOR)
2. Did the online format work well for you? What would be better considering COVID restrictions?
 - a. I was very comfortable engaging with the online format.
 - b. I think the online format worked well.
 - c. Yes.
 - d. I think the meeting format worked very well.
 - e. Yes.
 - f. The on line format was great. The facilitator and SME's were well versed and the presentation material was easy to see and follow.
 - g. Yes. This is as good as it gets during COVID.
 - h. This worked well for COVID times.
3. Did you receive the information you required?
 - a. Yes – 8
 - b. No – 0
4. If no, please describe.
 - a. N/A
5. Was the information provided easy to understand?
 - a. Yes – 8
 - b. No – 0
6. If no, please describe.
 - a. N/A
7. Was the information provided relevant?
 - a. Yes – 8
 - b. No – 0
8. If no, please describe.
 - a. N/A
9. Was attending the engagement session a good use of your time?
 - a. Yes – 7
 - b. No – 0
 - c. Skipped – 1
10. If no, please describe.
 - a. No responses.

11. Were you able to discuss your questions or feedback with an EPCOR representative?
 - a. Yes – 8
 - b. No – 0
12. If no, please describe.
 - a. N/A
13. Were EPCOR representatives helpful in answering your questions?
 - a. Yes – 7
 - b. No – 0
 - c. Skipped – 1
14. Please elaborate:
 - a. Monitored chat worked well to allow you to clarify elements of the presentation and open forum at end allowed more feedback.
 - b. Every question was answered thoroughly.
 - c. Online feedback during the session was sufficient.
 - d. Questions were all answered to everyone's satisfaction it seemed.
 - e. N/A
 - f. Meeting was well run. Amount of information shared appropriate for time limit. Having looked at info in advance helped. EPCOR was able to answer all the questions that came up.
15. Do you have any suggestions for improvement?
 - a. Consultation and First Nations within Treaty should be informed from day one of your projects for their input.
 - b. Limited attendance I expect because postcard arrived in the mail the same day as deadline for signing up.
 - c. No.
 - d. ... Was good to have gallery view at end for discussion part. Could potentially had available during icebreaker too. Then take away gallery after that for presentation time.
16. Is there anything that you would like more information about?
 - a. Yes, an update of ideas on the structures of your Air Monitoring Structures. I had suggested a Tee Pee Structure.
 - b. No.
 - c. How can more input in completing the projects as working with the group on which plants should be planted.
 - d. No.
 - e. No will send a couple comments in email to Laine re:vegetation project.