

ENERGY: FILL IN THE BLANKS



- 1 ELECTRICITY IS A FORM OF _____ THAT WE USE TO _____ MACHINES AND _____.
- 2 MATTER IS EVERYTHING AROUND US THAT HAS _____ AND TAKES UP _____.
- 3 ELECTRIC CURRENT IS THE _____ OF _____.
- 4 VOLTAGE IS THE _____ OR _____ THAT PUSHES _____ ALONG.
- 5 AN ELECTRIC CIRCUIT IS THE _____ THAT _____ TRAVEL ON TO FORM _____.
- 6 A SHORT CIRCUIT OCCURS WHEN TWO OR MORE _____ TOUCH THAT SHOULD NOT COME INTO _____.
- 7 A TRANSFORMER BOX _____ ELECTRICITY FROM THE _____ STATIONS INTO A USEABLE _____ FOR HOMES, SCHOOLS, AND BUSINESSES.
- 8 FOSSIL FUELS ARE FORMED FROM DEAD _____ AND _____.
- 9 TO CONSERVE SOMETHING IS TO PROTECT IT FROM _____, _____, OR _____.
- 10 TO BE ENERGY EFFICIENT YOU WOULD STRIVE TO USE THE _____ AMOUNT OF _____ POSSIBLE.
- 11 A BATTERY IS A DEVICE THAT _____ STORED _____ ENERGY INTO _____ ENERGY.

ANSWERS 1. ENERGY, POWER, ELECTRICAL DEVICES 2. MASS, SPACE 3. FLOW, ELECTRIC CHARGE 4. FORCE, PRESSURE, ELECTRICITY 5. PATH, ELECTRONS, VOLTAGE 6. WIRES, CONTACT 7. TRANSFORMERS/CHANGES, GENERATING, VOLTAGE 8. PLANTS, ANIMALS 9. HARM, LOSS, DESTRUCTION 10. LEAST, ENERGY 11. CONVERTS/CHANGES, CHEMICAL, ELECTRICAL



PROVIDING MORE

EPCOR

ELECTRICITY: TRUE OR FALSE?

- 
- 1 EPCOR IS A COMPANY WITH A LONG HISTORY OF PROVIDING SAFE, RELIABLE ELECTRICITY TO EDMONTON. T OR F
 - 2 ELECTRICITY IS A WONDERFUL RESOURCE THAT CAN BE DANGEROUS IF WE ARE IRRESPONSIBLE. T OR F
 - 3 SHORT CIRCUITS OCCUR WHEN WIRES ARE FRAYED OR EXPOSED. T OR F
 - 4 WHEN A CIRCUIT IS BROKEN, ELECTRICITY CAN STILL TRAVEL TO ITS DESTINATION. T OR F
 - 5 IF A BREAK IN THE CIRCUIT OCCURS FOR ONLY A MOMENT AT THE BEGINNING/START, ELECTRICITY CAN STILL TRAVEL THROUGH. T OR F
 - 6 TRANSFORMER BOXES ARE IN NEIGHBOURHOODS FOR KIDS TO PLAY ON THEM. T OR F
 - 7 EPCOR STAFF NEEDS ACCESS TO THE TRANSFORMER BOXES WHEN A POWER OUTAGE OCCURS. T OR F
 - 8 ELECTRICITY ALWAYS TAKES THE LONGEST/SLOWEST PATH TO THE GROUND. T OR F
 - 9 WE CAN CONTROL THE DIRECTION OF ELECTRICITY THROUGH THE USE OF CONDUCTORS AND INSULATORS. T OR F
 - 10 YOU ARE NOT A CONDUCTOR OF ELECTRICITY. T OR F
 - 11 DOWNED POWER LINES MEAN THAT A CIRCUIT HAS BEEN BROKEN AND THE AREA IS DANGEROUS. T OR F
 - 12 MAKE SURE THAT YOU ARE AT LEAST 10 METRES AWAY FROM A DOWNED POWER LINE. T OR F
 - 13 POWER BARS ARE NOT GOOD ALTERNATIVES TO SEVERAL PLUG-INS FOR A SINGLE OUTLET. T OR F
 - 14 STICKING OBJECTS INTO OUTLETS IS DANGEROUS. T OR F
 - 15 IT ISN'T SAFE TO MIX POWER AND WATER. T OR F

ANSWERS 1.T 2.T 3.T 4.F 5.F 6.F 7.T 8.F 9.T 10.F 11.T 12.T 13.F 14.T 15.T

PROVIDING MORE 

EPCOR



WORD SEARCH



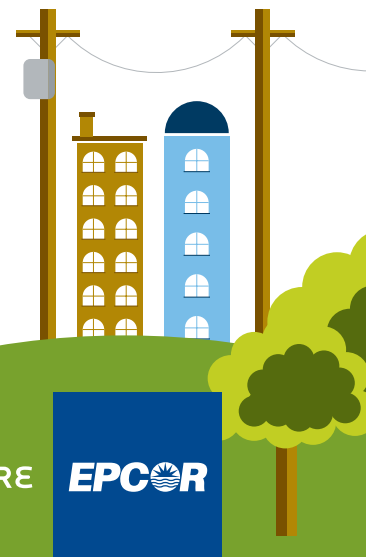
Ε S T I N S U L A T O R A
Y L A W A Y F R O T M F A
L L Ε Ε N L I N Ε S O D O
N T O C O N S Ε R V Ε M V
Ε R L O T R O T S I S Ε R
M A T T Ε R A I D P T L O
L U G I N S I U Ε N X Ε T
P O S Ε D C A C Ε B L C C
V O L T A G Ε R I Y Ε T U
S C P O W Ε R I A T N R D
L Ε A D T U O C S Ε Y O N
H O Ε P C O R C K F O N O
R F I R Ε S A F Ε A T Y C
W A T Ε R M A T T S Ε R S

- ELECTRICITY
- CIRCUIT
- RESISTOR
- CONDUCTOR
- INSULATOR
- ELECTRON
- ATOM
- MATTER
- CURRENT
- VOLTAGE
- SAFETY
- EPCOR
- POWER
- CONSERVE
- WATER

GENIUS POINTS

FIND A MESSAGE FROM EPCOR USING THE LEFTOVER LETTERS

- 1 _____
- 2 _____
- 3 _____
- 4 _____



PROVIDING MORE **EPCOR**

VOCABULARY AND DEFINITIONS



ELECTRICAL CIRCUIT

A FORM OF ENERGY THAT WE USE TO POWER MACHINES AND ELECTRICAL DEVICES.

SHORT CIRCUIT

EVERYTHING AROUND US THAT HAS MASS (WEIGHT) AND TAKES UP SPACE. (EXAMPLES: APPLE, PERSON, DESK, AIR)

INSULATORS

THE PATH THAT ELECTRONS TRAVEL ON TO FORM VOLTAGE.

ELECTRICITY

THE FORCE OR PRESSURE THAT PUSHES ELECTRICITY ALONG. (SIMILAR TO THE FORCE OF/BEHIND WATER MOVING THROUGH PIPES)

TRANSFORMER BOX

THIS OCCURS WHEN 2 OR MORE WIRES TOUCH THAT SHOULD NOT COME INTO CONTACT.

FOSSIL FUELS

THE FLOW OF ELECTRIC CHARGE.

MATTER

MATTER THAT ALLOWS ELECTRICITY TO FLOW THROUGH IT. (EXAMPLES: METAL, WATER, PEOPLE, ANIMALS)

ENERGY EFFICIENCY

MATTER THAT STOPS THE FLOW OF ELECTRICITY. (EXAMPLES: GLASS, RUBBER, PLASTIC)

ELECTRIC CURRENT

LARGE OUTDOOR ELECTRICAL BOXES THAT TRANSFORM OR CHANGE ELECTRICITY FROM THE GENERATING STATIONS INTO A USABLE VOLTAGE FOR HOMES, SCHOOLS, AND BUSINESSES.

BATTERY

MATTER THAT RESISTS OR RESTRICTS THE FLOW OF ELECTRICITY. (EXAMPLES: CERAMIC RODS, COPPER WIRES, AND CARBON)

VOLTAGE

NON-RENEWABLE RESOURCE FORMED FROM DEAD PLANTS AND ANIMALS. USEABLE FORMS ARE COAL, OIL, AND NATURAL GAS.

CONDUCTORS

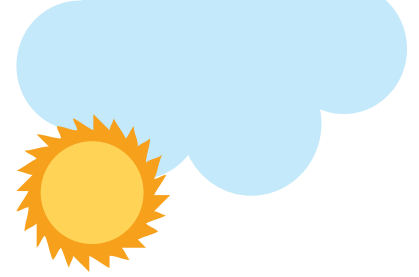
TO USE THE LEAST AMOUNT OF ENERGY TO ACCOMPLISH A GOAL/JOB.

RESISTOR

A DEVICE THAT CONVERTS STORED CHEMICAL ENERGY INTO ELECTRICAL ENERGY.

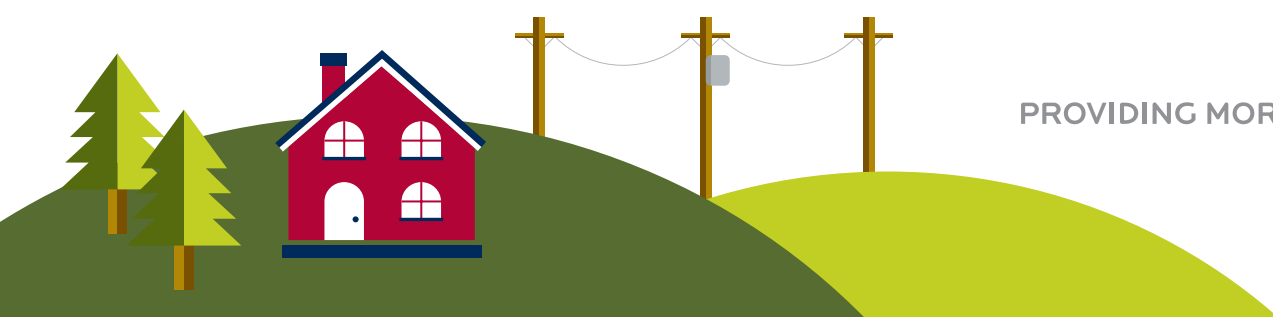


APPLICATIONS OF ELECTRICAL DEVICES



LIST DEVICES IN APPROPRIATE COLUMNS AND CIRCLE THE 'H' AND/OR 'S' TO INDICATE IF IT IS USED IN THE HOME (H) OR THE SCHOOL (S).

HEATING (EX. FURNACE (H)(S))	LIGHTING (EX. NIGHT LIGHT (H)(S))	COMMUNICATING (LANDLINE PHONES (H)(S))
H/S	H/S	H/S
H/S	H/S	H/S
H/S	H/S	H/S
H/S	H/S	H/S
H/S	H/S	H/S
H/S	H/S	H/S
H/S	H/S	H/S
H/S	H/S	H/S
H/S	H/S	H/S
H/S	H/S	H/S
H/S	H/S	H/S
H/S	H/S	H/S
H/S	H/S	H/S
H/S	H/S	H/S
H/S	H/S	H/S
H/S	H/S	H/S
H/S	H/S	H/S
H/S	H/S	H/S
H/S	H/S	H/S



PROVIDING MORE

