

SOLAR MODULE INFORMATION:

BRAND: CANADIAN SOLAR
 MODEL: CS6K-300MS
 CERTIFICATION MARK: cUL1703
 QUANTITY: 24
 COMBINED STC OUTPUT: 7200W (DC)
 LOCATION: HOUSE ROOF

DC OPTIMIZER INFORMATION:

BRAND: SOLAR EDGE
 MODEL: P300
 CERTIFICATION MARK: IEC62 109-1
 NUMBER OF MODULES PER STRING: 24
 COMBINED STC OUTPUT: 7200W (DC)
 VOLTAGE OPEN CIRCUIT: 12Vdc
 MAX POWER VOLTAGE: 60Vdc
 MAX POWER CURRENT: 15Adc

INVERTER INFORMATION:

BRAND: SOLAR EDGE
 MODEL: SE 6000A-US
 CERTIFICATION MARK: CSA 22.2
 QUANTITY: 1
 INDIVIDUAL STC OUTPUT: 6000W (AC), 240Vac, 25Aac
 COMBINED STC OUTPUT: 6000W (AC), 240Vac, 25Aac
 LOCATION: BASEMENT

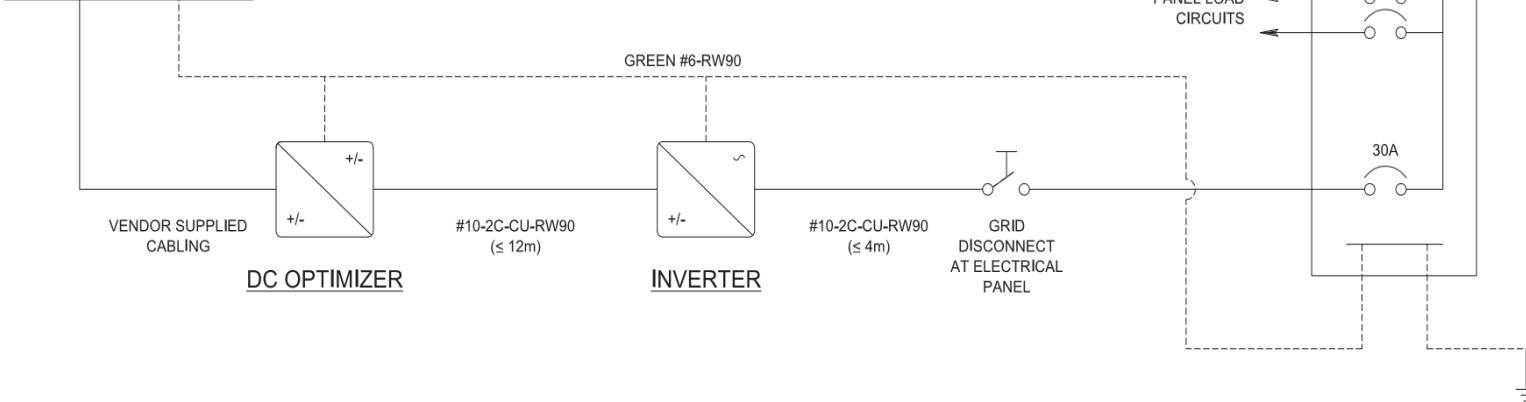
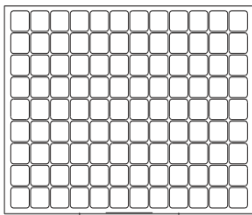
UTILITY CONNECTION

SINGLE BI-DIRECTIONAL METER

SERVICE ENTRANCE INFORMATION

VOLTAGE: 120/240V
 AMPERAGE: 200A
 LINE PHASE: 1-PHASE
 WIRE SERVICE PROVIDER: EPCOR

SOLAR MODULE ARRAY



MAIN BREAKER PANEL

BUS BAR RATING: 200A

NOTES:

1. ALL COMPONENTS SHALL MEET CANADIAN ELECTRICAL PRODUCT CERTIFICATION STANDARDS.
2. ALL COMPONENTS SHALL CONTAIN NAMEPLATE LABELS INDICATING THE ACCEPTABLE CERTIFYING ORGANIZATION.
3. ROOFTOP ARRAY WIRING AND CONNECTIONS ARE CONSIDERED INACCESSIBLE IN ACCORDANCE WITH CE CODE 64-062 AND 64-210.
4. DIAGRAM TO BE INSTALLED IN ACCORDANCE WITH CE CODE 64-072, 64-074, 64-076, 64-200 AND 84-030.
5. PU ARRAY TO BE BONDED USING #6 CU, ARRAY GROUNDING REQUIRED PER CE CODE 64-086 AND 64-222.

ENGINEER STAMP	GEN RESIDENCE		
	12345 67 STREET NW		
	EDMONTON, ALBERTA		
Date	2023-01-07	Sht.	1 of 1
Rev.			0
Drawing No.	E-01	Scale	N.T.S.
APEGA PERMIT # xxxxx			